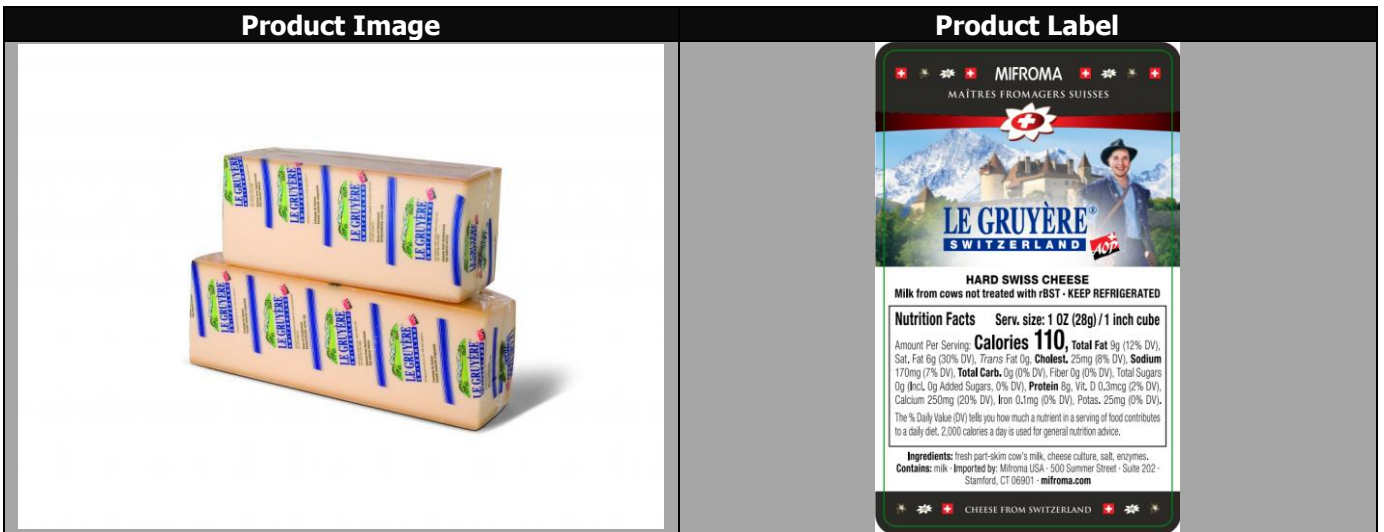




GRUYERE, AOC KING CUTS MIFROMA 2/6 LB

Item Number :	030770	Country of Origin :	SWITZERLAND
Pack Size :	2/6 LB	RW or EW weight :	RW
Brand on Box	MIFROMA	Brand on Item:	MIFROMA

ON Box	ON Product	UPC :	_____	Date Code :	PACK DATE
		GTIN :	_____	Date Code Format :	YY DDD (Julian)
		EAN :	_____	Date Code Location:	CASE LABEL



Product Properties

Ingredient/Product Statement :

Fresh Part-Skim Cow's Milk, Cheese Culture, Salt, Enzymes.

Contains: Milk

Kosher (Y/N; Certification)	N	Rind (Y/N)	Y
Halal (Y/N)	N	Rind Edible (Y/N)	Y
Organic (Y/N)	N	RBST Free (Y/N)	Y
Piece Count (Case)	2	Preservatives (Y/N)	N
Maturity/Aged	150 DAYS MIN.	Lactose Free (Y/N)	Y
Milk Type	COW	GMO Free (Y/N)	Y
Rennet Type	ANIMAL	Casing (Y/N; Type)	N
Special Pre-Order (Y/N)	N	Pasteurized/Thermalized/Raw/Other	RAW
BPA NI (Y/N);	Y (No BPA)		

Shelf Life:

Shelf Life from Packing	270 DAYS	Shelf Life if Frozen	N/A
Storage Temperature	33-40° F	Shelf Life Defrosted	N/A

Physical Properties:

Color	TAN
Cheese Type	GRUYERE
Aroma & Flavor	BUTTERY, CARMEL AND FRUITY NOTES
Texture	SAVORY AND SLIGHTLY ELASTIC
Appearance	DARK YELLOW CHEESE COLOR WITH LIGHT BROWN RIND
Body	LOAF
Shape	RECTANGULAR

Chemical Analysis:

		Specification	Range
Moisture	%		34 – 37
Fat in Dry Matter	%		49 – 53
Milk Fat	%		28 – 35
Salt		1.5 g/100g	1.3 - 1.7
Ash		3.93 g/100g	

Microbiological Analysis:

	Unit	Specification	Method
Coliforms	cfu/g	<100	
E. coli.	cfu/g	<10	
Yeast	cfu/g	<200	
Moulds	cfu/g		
Salmonella	cfu/g	Absent in 25g	
Listeria	cfu/g	Absent in 25g	
Enterobacteriaceae	cfu/g	<100	
Staphylococcus aureus	cfu/g	<100	
Staphylococcus coagulase	cfu/g	<10	

Nutritionals
 (*Daily Value % Based on a 2,000 Calorie Diet)

Serving Size: 100g	Serving Size: 1 oz (28g) / 1 inch cube
Servings Per Container: varied	Servings Per Container: varied

	Per Serving	DV%
Calories:	410	
Total Fat (g)	33	42%
<i>*Changed from 65-78g :</i>		
Saturated Fat (g):	21	105%
Trans Fat (g):	1.5	
Cholesterol (mg):	90	30%
Sodium (mg)	600	26%
<i>*Changed from 2,400-2,300mg:</i>		
Total Carbohydrate (g)	0	0%
<i>*Changed from 300-275g:</i>		
Dietary Fiber (g)	0	0%
<i>*Changed from 25-28g :</i>		
Total Sugars (g):	0	
Added Sugars	0	0%
Protein (g):	27	
Vitamin D (mcg)	1.10	6%
<i>*Changed from 400IU (10µg) – 20µg:</i>		
Calcium (mg)	900	70%
<i>*Changed from 1,000–1,300mg:</i>		
Potassium (mg)	90	2%
<i>*Changed from 3,500-4,700mg:</i>		
Iron:	0.4	2%

	Per Serving	DV%
Calories:	110	
Total Fat (g)	9	12%
<i>*Changed from 65-78g :</i>		
Saturated Fat (g):	6	30%
Trans Fat (g):	0	
Cholesterol (mg):	25	8%
Sodium (mg)	170	7%
<i>*Changed from 2,400-2,300mg:</i>		
Total Carbohydrate (g)	0	0%
<i>*Changed from 300-275g:</i>		
Dietary Fiber (g)	0	0%
<i>*Changed from 25-28g :</i>		
Total Sugars (g):	0	
Added Sugars	0	0%
Protein (g):	8	
Vitamin D (mcg)	0.3	2%
<i>*Changed from 400IU (10µg) – 20µg:</i>		
Calcium (mg)	250	20%
<i>*Changed from 1,000–1,300mg:</i>		
Potassium (mg)	25	0%
<i>*Changed from 3,500-4,700mg:</i>		
Iron:	0.1	0%

*Please note that changes in the Daily Values amounts and Nutrients declared. Serving Sizes has also changed for many commodities, please reference the attached document for appropriate serving size.

Packaging

Cases Per Pallet	110	Case Dimensions (in.)	13"L x 7.3"W x 4.7"H
Block & Tier	22 x 5	Unit Dimensions (in.)	12.6"L x 3.62"W x 4.5"H
Case Cube (ft[^])	0.2581	Gross Weight (Avg.)	12.5 lbs
Packaging Type	CRYOVAC	Tare Weight	0.5 lbs
		Net Weight (Avg.)	12 lbs


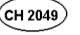

Allergen List

The first column indicated the allergens that may be found in the product, either by addition or by cross contamination. The second column indicates the allergens that are present in other products that are run on the same equipment but at a different time, in the plant. The third column indicates whether any of those ingredients are present in the plant.

Each square is answered with a YES or NO and, when applicable, the name of an ingredient.

Components	Present in Product	Present in Other Products Manufactured on the Same Line	Present in the Same Manufacturing Plant
<i>Peanuts (including peanut oil)</i>	No	No	No
<i>Tree Nuts</i>	No	No	Yes
<i>Sesame Seeds</i>	No	No	No
<i>Milk & derivatives (Specify: milk, casein, whey, etc)</i>	Yes; Milk	Yes; Milk	Yes; Milk
<i>Eggs</i>	No	No	Yes; Lysozyme
<i>Fish</i>	No	No	No
<i>Shellfish</i>	No	No	No
<i>Soy (excluding soy oil)</i>	No	No	No
<i>Wheat (Gluten)</i>	No	No	No
<i>Sulphites</i>	No	No	No
<i>Corn</i>	No	No	No
<i>Poppy Seeds</i>	No	No	No
<i>Sunflower Seeds</i>	No	No	No
<i>MSG (monosodium glutamate)</i>	No	No	No
<i>Tartrazine</i>	No	No	No

Case Label

<p>LE GRUYERE AOP MILD KING CUT</p> <p>Ingredients: Fresh part-skim cow's milk, cheese culture, salt, enzymes Contains: milk</p> <p>Distributed by Atalanta Corporation, Elizabeth, NJ 07206</p> <p>Atalanta Item: 030770 Mifroma USA Item: 230.085 Lot Code: 1622995 - 4216 N° Order: M- 856</p> <p>NetParameter 0716124</p>	  Product of Switzerland
<p>Fine cheese KEEP REFRIGERATED</p> <p>Pack Date: 20 - 084</p> <p>NET WT. 0.00 lbs 0.000 kg</p>	
 <small>(01)97617067040519(15)200915(3202)000000(10)1622995</small>	

Supplier No.	S1296
Manufacturer No.	F03MIF
Audit / Expiry Date	IFS/SEP2022