

DESCRIPTION

Product Designation	WHOLE FROZEN RAW SHRIMPS
Product range	USA Cristal Blue
Scientific name	<i>Litopenaeus Stylirostris</i>
Origin	Farmed and manufactured in New Caledonia
Net weight	1 kg (1010 g minimum)
Ingredients	<u>Shrimp</u> (crustacea), <u>metabisulfite de sodium</u> (preservative)
Freezing type	Brine quick freezing
Agreement number	EA-11-38
FDA number	19873077524
Email	sopac@sopac.nc
Website	www.sopac.nc

ORGANOLEPTIC CHARACTERISTICS

Small scar & black spot < 2mm	100%
Big scar & black spot > 2 mm	≤ 25%
Soft	≤ 9%
Shell defect	≤ 4%
Broken antennas	100%
Rostrum broken on the base	100%
Yellow, orange, brown, red gills	≤ 30%
Dark and white gills	0%
Dark head	≤ 20%
Red head	≤ 30%
Big red head	≤ 40%
Red legs & fins	100%
Smell	Natural
Texture	Firm

MICROBIOLOGICAL CHARACTERISTICS

Germs sought	Release criteria
<i>Salmonella spp</i>	Absence in 25 g
<i>Vibrio parahaemolyticus</i>	Absence in 0.01 g
Sulphite-reducing anaerobes	≤ 10 CFU/g
Thermotolerant coliforms	≤ 10 CFU/g
Aerobic microorganisms	≤ 10000 CFU/g

CHEMICAL CHARACTERISTICS

Parameters sought	Release criteria
Sulphites	< 100 ppm

NUTRITION FACTS

About 9 servings per container	
Serving size 4 oz (110g/ 1/9 bag)	
Calories per serving 100	
Amount/serving	% Daily Value
Total Fat 1g	1%
Cholesterol 180mg	60%
Sodium 450mg	20%
Total Carbohydrate <1g	0%
Protein 20g	

Iron 4.4mg 25% - Potassium 330mg 8%

SIZE / PRODUCT CODE / GENCOD

Size per Kg	Size per Lb	Product code	EAN Box	EAN Cardboard
16/20	8/9	111UG11	878648000603	13700064300606
21/25	10/12	111UG01	878648000702	13700064300705
26/30	12/14	111UG21	878648000801	13700064300804
31/40	14/18	111UG31	878648000900	13700064300903
41/50	18/22	111UG81	878648001006	13700064301009

BOX

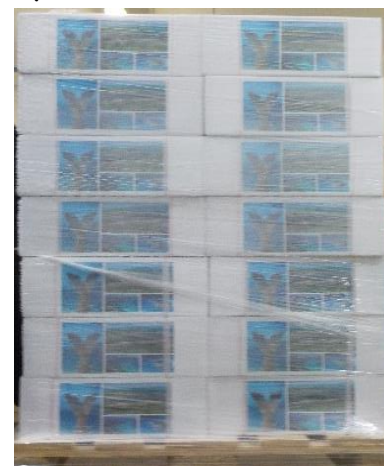
Description: 1 cardboard piece of 1 Kg printed with white background and cover (packaging details on next page)
Lid dimensions: 258x176x54mm
Bottom dimensions: 254x175x 54mm
Printing: on the lid, sides and bottom

Leaf-Covered chrimps plastic in box



PALLETIZING

7 layers of 8 Master: 6x56 = 336 kg



CARDBOARD

Description: 6 Kg white unwaxed cardboard with printing, taped and strapped
Dimensions: 370 x 270 x 175 mm



LABEL

Description: synthetic polypropylene thermal transfer adhesive paper

Box dimension: 100 x 50 mm

Master dimension: 100 x 80 mm

Labeling statements:

- Agreement number and FDA number
- Trade name
- Origin information and scientific name
- Batch number, product code, size and net weight
- Manufacturing date which corresponds to the date of first freezing
- Best before date
- Ingredients
- Storage conditions
- Bar code (EAN)
- Customer address

Agrément/Agreement: EA-11-38 - FDA Number: 19873077524
 CREVETTES ENTIERES CRUES SURGEELES
 WHOLE FROZEN RAW SHRIMPS
 Litopenaeus Stylirostris-Elevées Nelle-Calédonie/Farmed in New Caledonia
 SOPAC SA - BP 2987 - 98846 Nouméa - NOUVELLE CALEDONIE

LOT/BATCH	CODE PRODUIT/PRODUCT CODE	CALIBRE/SIZE
B1122171	111UG01	10/12/Lb 21/25/kg

POIDS NET/NET WEIGHT: 6 x 2.2 Lbs 6 x 1kg
 Fabrication-Surgélation/Processed-Frozen: 06-20-2022
 A consommer de préférence avant/Best Before: 12-19-2024

Ingredient: Crevette/Shrimp. Conservateur/Preservative: sodium metabisulfite.
 Conservation: 24H au réfrigérateur/ 24H in the refrigerator.
 -18°C jusqu'à la date indiquée/-1°F until the best before date.
 Produit congelé, ne pas recongeler un produit décongelé.
 Frozen product, never refreeze a defrosted product. 1821HR



(01)13700064300705(10)222252(21)020021

Agrément/Agreement EA-11-38 - FDA Number: 19873077524
 CREVETTES ENTIERES CRUES SURGEELES
 WHOLE FROZEN RAW SHRIMPS
 Litopenaeus Stylirostris Elevées en Nelle-Calédonie/Farmed in New Caledonia

LOT/BATCH	CODE PRODUIT/PRODUCT CODE	CALIBRE/SIZE
B1122171	111UG01	10/12/Lb 21/25/kg

POIDS NET/NET WEIGHT: 2.2 Lbs 1kg
 Fabrication-Surgélation/Processed-Frozen: 06-20-2022
 A consommer de préférence avant/Best Before: 12-19-2024
 Ingredient: Crevette/Shrimp. Conservateur/Preservative: sodium metabisulfite.
 Conservation: 24H au réfrigérateur/ 24H in the refrigerator.
 -18°C jusqu'à la date indiquée/-1°F until the best before date.
 Produit congelé, ne pas recongeler un produit décongelé.
 Frozen product never refreeze a defrosted product.

PETROVICH CAVIAR . INC
 13720 S.Gramercy Place
 Gardena, CA 90249
 USA
 Tel : 310-391-5422
 Fax : 310-572-4452

PACKAGING BOX 1Kg USA CRISTAL BLUE



Product of New Caledonia Farm raised.
 Ingredients: Shrimp, crustaceans, sodium metabisulfite.
 Manufactured by SOPAC SA BP 2987 - 98846 NOUMEA - NEW CALEDONIA.

Store below -18°C (-1°F). Thaw under cold running water.
 Never refreeze a thawed product. Can be consumed raw or cooked.

Product of France
 (New Caledonia, the largest lagoon in the world)

The Cristal Blue (Litopenaeus stylirostris) is best in a pollution free environment, without GMO, antibiotics or coloring.
 Low-density production and total traceability ensure food security for consumers and guarantee the highest quality premium
 recognized for its rich flavour and fine taste.

www.sopac.nc

Net Wt.: 35 oz (2.2 lb)/(1 kg)



Frozen Raw blue shrimp



Nutrition Facts		Serving Size	
per 100g (3.5 oz)		per 100g (3.5 oz)	
Total Fat	1%	Total Fat	1%
Cholesterol	60%	Cholesterol	60%
Sodium	0%	Sodium	0%
Total Carbohydrate	0%	Total Carbohydrate	0%
Protein	20%	Protein	20%